



PAVLA HANAČKOVÁ  
LINH DAO

TAKE ME HOME: Waters of the World



# TAKE ME HOME:

Waters of the World

ALBATROS





A GIANT BODY OF WATER THAT COVERS MUCH OF OUR PLANET.



THERE ARE 5 OCEANS ON EARTH: THE PACIFIC, THE ATLANTIC, THE INDIAN, THE ARCTIC, AND THE SOUTHERN OCEAN.

# The Atlantic Ocean

“Ahoy! Welcome ashore. My name is Sid and I’m an expert on the Atlantic Ocean. Is there anyone who prefers freshwater? Or who cannot swim? Well, I’ll do my best to guide you through the ocean. I’ve already arranged a little surprise for you. Follow me!”



OCEANS ARE VAST AND SALTY. WHAT THEY ARE LIKE DEPENDS ON THEIR LOCATION: SOME ARE DARK AND COLD, OTHERS ARE LIGHT AND WARM.



OCEANS ARE HOME TO VERY DIVERSE GROUPS OF ANIMALS. SOME CREATURES ARE COLORFUL, OTHERS ARE HARD TO SPOT. SOME ANIMALS ARE GIGANTIC, OTHERS ARE TEENY-WEENY. BOTH CARNIVORES AND VEGETARIANS LIVE HERE.

THE OCEANS ARE LIKE SIBLINGS: THEY ALL HAVE SOMETHING IN COMMON YET ARE VERY DIFFERENT FROM EACH OTHER. FOR EXAMPLE, THE ARCTIC AND SOUTHERN OCEANS ARE COVERED WITH ICE, WHILE OTHER OCEANS ARE WARMER AND FULL OF COLORS.



OCEANS ARE SO VAST THAT WHEN YOU’RE STANDING ON THE BEACH, THEY LOOK ENDLESS. THEY DO END, BUT STILL, THEY TAKE UP A LOT OF SPACE ON OUR PLANET: MORE THAN 70%!



THE IMPACT THE OCEANS HAVE ON OUR PLANET IS IMMENSE. THEY AFFECT OUR CLIMATE AND PLAY AN INTEGRAL ROLE IN THE WATER CYCLE. AS THEIR WATER EVAPORATES, IT EVENTUALLY ENDS UP AS THE MAIN SOURCE OF WATER.



LOOK!



I NEED TO COOL DOWN.



THIS IS EXCITING.



HELP!





Large, seemingly endless oceans hide very diverse places, animals, and plants, from sunny coastal waters teeming with life to deep, dark, inhospitable areas. The ocean currents create a network that circulates through the water. Many creatures use them like a taxi or public transport—they ride them until they reach areas with food. The ocean plays an irreplaceable part in the water cycle. As the sun shines on its surface, it gets warmer—until the water evaporates. This vapor transforms into clouds. The water then falls in the form of raindrops. These raindrops then became part of other bodies of water, such as rivers, and eventually flow back into the ocean.

THE NORTHERN GANNET

THE ATLANTIC FLYING FISH

THE SWORDFISH

THE COMMON BOTTLENOSE DOLPHIN

THE EUROPEAN ANCHOVY

THE ATLANTIC BLUE MARLIN

THE ATLANTIC BLUEFIN TUNA

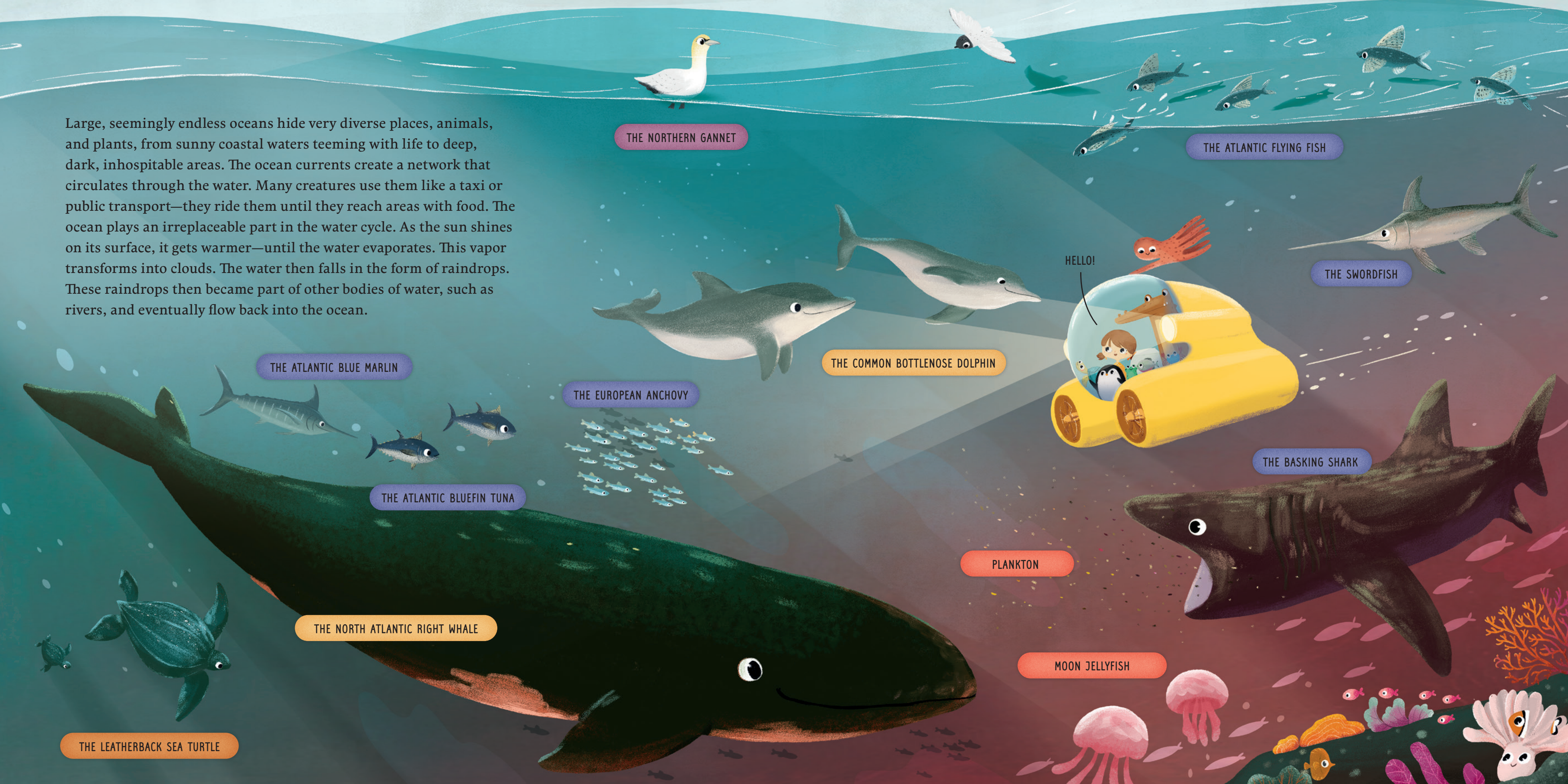
THE BASKING SHARK

PLANKTON

MOON JELLYFISH

THE NORTH ATLANTIC RIGHT WHALE

THE LEATHERBACK SEA TURTLE



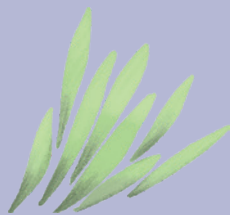


## WHAT GROWS AND LIVES HERE?



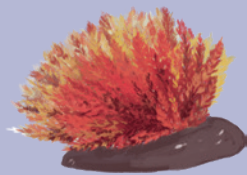
### PHYTOPLANKTON

... ARE PART OF PLANKTON. FUNCTIONING LIKE TREES, THEY HELP CREATE OXYGEN. THEY ARE TINY, YET EXTREMELY USEFUL.



### SEA GRASSES

... CAN CREATE LARGE MEADOWS. THEY ARE VERY IMPORTANT AS THEY PROVIDE FOOD AND SHELTER FOR MANY CREATURES, INCLUDING SEA TURTLES.



### RED ALGAE

... ARE FOUND THROUGHOUT THE TROPICAL SEAS. THEY ARE ONE OF THE OLDEST PLANTS ON EARTH. SOME OF THEM HELP BUILD CORAL REEFS.



### BROWN ALGAE

... ARE AN IMPORTANT PART OF MANY MARINE ANIMALS' DIETS. THE BIGGEST CREATE KELP FORESTS.



### CORALS

... SOLVE THIS RIDDLE: IT LOOKS LIKE A PLANT YET IT'S NOT A PLANT. WHAT IS IT? A CORAL! THEY ARE ANIMALS RELATED TO JELLYFISH AND SEA ANEMONES.



### SEA ANEMONES

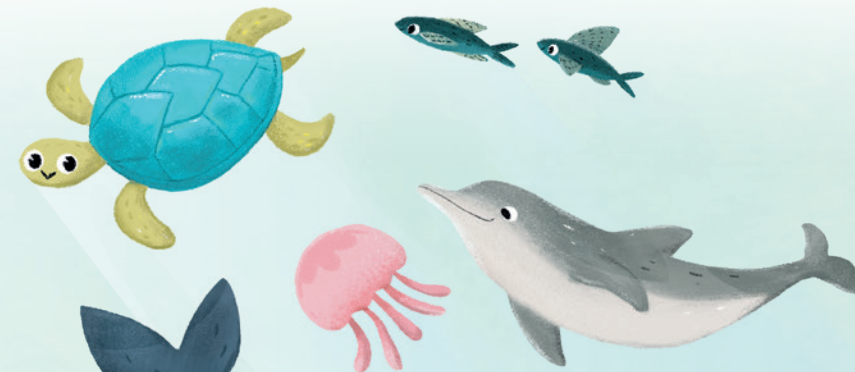
... ARE ALSO ANIMALS. EVEN THOUGH THEY CREATE OCEAN GARDENS, THEY ARE EFFICIENT HUNTERS.

# Layer by Layer

If you had a submarine that could cope with deep depths, you could use it to discover all the layers of the ocean. As you'd start to descend, the landscape would transform right before your eyes.

## SUNLIGHT ZONE

IN THE SUNLIGHT ZONE ALL SORTS OF ANIMALS CAN BE FOUND. AND THEY'RE THRIVING BECAUSE OF THE ABUNDANCE OF FOOD, LIGHT, AND THE IDEAL TEMPERATURE OF WATER. EVEN PLANTS THAT NEED SUNLIGHT FOR GROWTH CAN BE FOUND IN THIS LAYER.



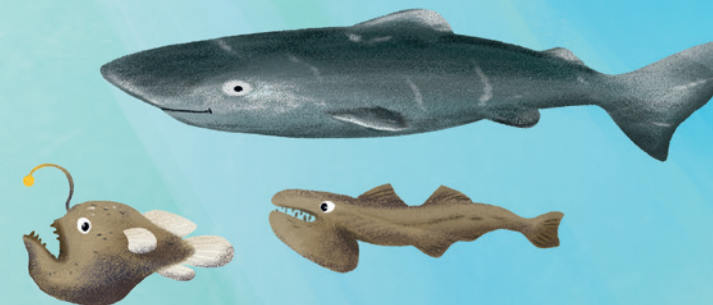
## TWILIGHT ZONE

THE TWILIGHT ZONE IS A TRANSITIONAL ZONE BETWEEN THE SUNLIT LAYER AND THE PITCH-BLACK DARK DEPTHS. SOME ANIMALS MOVE BETWEEN THESE LAYERS. FOR EXAMPLE, SPERM WHALES DIVE HERE TO FEED ON SQUID AND THEN GO UP AGAIN.



## MIDNIGHT ZONE

MOST OF THE ANIMALS HERE REMAIN HIDDEN FROM US. THEY LIVE IN THE MIDNIGHT ZONE, WHICH GOES ALL THE WAY DOWN TO OCEAN FLOOR. PEOPLE CAN REACH THESE PLACES ONLY WITH THE HELP OF A SPECIAL SUBMARINE. ANIMALS WHO LIVE HERE HAVE SPECIAL EQUIPMENT TO DEAL WITH THE DARKNESS, COLD, AND INTENSE PRESSURE.



## WHO LIVES HERE?



### ZOOPLANKTON

... ARE A MAJOR PART OF MANY CREATURES' DIETS. THEY CONSIST OF TINY SHELLFISH, JELLYFISH, EVEN LARGER SOFT-BODIES ANIMALS THAT ARE CARRIED AROUND BY THE OCEAN CURRENTS.



### JELLYFISH

... HAVE A SOFT, TRANSPARENT BODY THAT LOOKS LIKE A BELL OR AN UMBRELLA WITH TENTACLES. LEATHERBACK SEA TURTLES AND VARIOUS FISH LIKE TO MUNCH ON THEM.



### THE YELLOWFIN TUNA

... IS A GREAT SWIMMER AND HUNTER. THIS TORPEDO-SHAPED FISH SWIMS IN SCHOOLS AND SOMETIMES EVEN JOINS THE DOLPHINS.



### THE GREAT WHITE SHARK

... IS A FEARED PREDATOR THAT EATS FISH, SEA TURTLES, AND VARIOUS SMALL MAMMALS. SHARKS ARE VERY IMPORTANT, AS THEY MAINTAIN BALANCE IN THE OCEANS.



### SQUID

... ARE A VERY IMPORTANT FOOD SOURCE FOR WHALES, SHARKS, FISH, AND SEABIRDS. SEEING THEM IN THE OCEANS MEANS THE WATER QUALITY IS GREAT.



### THE COMMON BOTTLENOSE DOLPHIN

... IS A SOCIAL, SMART, AND PLAYFUL ANIMAL. DON'T BE FOOLED BY ITS SMILE: IT'S ALSO A GREAT HUNTER.



# TAKE ME HOME: Waters of the World

WRITTEN BY PAVLA HANÁČKOVÁ  
ILLUSTRATED BY LINH DAO

Come around the world with us and get to know the different types of waters and their inhabitants as well as plants. Our animal friends will join you on this journey. They're having the adventure of a lifetime: they want to go home. But what if they don't know where their home is? Luckily, they have Annie. She'll accompany them on their journey to discover various waters—from polar waters to the Amazon River—to find which one is the right one for each of them. And what happens after they reach their final destination? The animals would love to tell you. Join us on our journey. Along the way you'll learn many new things!

© Designed by B4U Publishing for Albatros, an imprint of Albatros Media Group, 2021. Na Pankráci 30, Prague 4, Czech Republic  
Printed in China by HUNG HING OFF-SET PRINTING Co., Ltd.

All rights reserved. Reproduction of any content is strictly prohibited without the written permission of the rights holders.

ISBN 978-80-00-05944-0



9 788000 059440

5 1 4 9 5



\$ 14.95

[www.albatrosbooks.com](http://www.albatrosbooks.com)

CE

WARNING:  
Choking hazard.  
Not suitable for children  
under 36 months.

